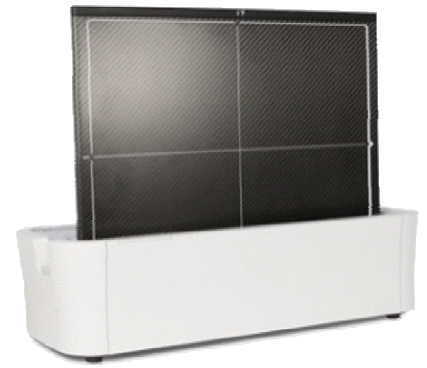


# Colenta<sup>®</sup> DR Panel KM 1717-WLC/WC

The DR Panel KM 1717-WLC/WC (wireless/wired Cesium Iodide) is the latest State of The Art direct X-Ray sensitive, portable, Flat Panel Detector 17"x17" with a high DQE performance to ensure superior image quality by meeting all requirements in high standard general purpose diagnosis.

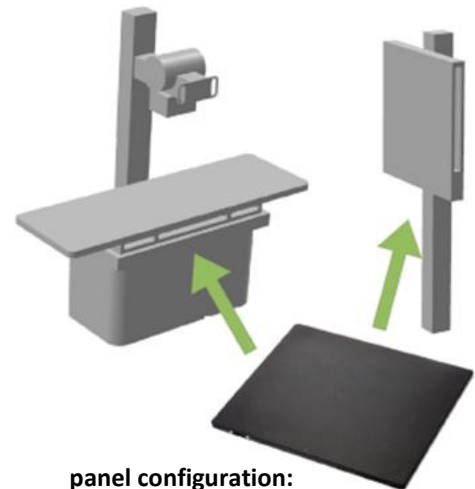
This DR Panel is a digital radiography detector with the large field coverage area of 17"x17" designed for general radiographic application using Colenta image processing software DX Easy Imaging.

This DR Panel can be installed in a single or dual or multiple detector-configuration depending on the required applications. For dual or multiple detector-configurations, the Colenta DR Panel can also be installed in combination with other flat panel detector models of Colenta.



## Features & Benefits

- ✓ Use with existing X-Ray equipment
- ✓ Slim and light-weight design, approx. 3 kg
- ✓ Same dimensions as 17"x17" film cassette/CR panel
- ✓ Attachable tethered cable (optional) for Image Acquisition and Transmission through Gigabit ethernet interface
- ✓ Brilliant Modulation Transfer Function (MTF)
- ✓ 16 bit signal digitalization provides Wide Dynamic Range
- ✓ Image acquisition and transfer time within some seconds
- ✓ Communication through WLAN (IEEE 802.11n)
- ✓ Fully compatible with DICOM 3.0<sup>1)</sup> standard
- ✓ Reduced X-Ray dose for patient safety
- ✓ Interchangeable, rechargeable panel battery
- ✓ Optimized algorithms for each different body part
- ✓ Simple & easy integration with all kinds of digital radiography systems
- ✓ Empowered by DX Easy Imaging Software



panel configuration:  
single, dual or multiple

## COLENTA DX Easy Imaging Software

The Image Acquisition Software enables an image preview in approximately 4 seconds after X-Ray exposure for prompt image previewing/confirmation.

The Image Processing Software provides consistent and excellent image quality, using optimized algorithms for each different body part, allowing various pre-set image processing modes for different studies, at considerably reduced X-Ray dose.

The DX Easy Imaging Software is fully DICOM 3.0 compatible, providing image data transfer to any DICOM device, PACS<sup>2)</sup> or RIS, for efficient data management, printing, archiving and remote image viewing.

<sup>1</sup> DICOM Digital Imaging and COmmunications in Medicine

<sup>2</sup> PACS Picture Archiving and COmmunication System

# Colenta DR 1417-WLC/WC Specifications

<b>Technology</b>	Flat Panel Detector, Indirect conversion method
<b>Scintillator</b>	CsI (Cesium Iodide)
<b>Effective imaging area</b>	424.9 x 424.9 mm (17 x 17")
<b>Resolution</b>	2.428 x 2.428 Pixel
<b>Pixel pitch</b>	175 µm x 175 µm
<b>Grayscale</b>	16 Bit (65.536)
<b>Image acquisition and transfer time</b>	8-14 s
<b>Method of Exposure (trigger)</b>	DR Trigger
<b>Image transfer</b>	wired Ethernet / Wireless communication (IEEE802.11a/b/g/n)
<b>W-LAN encryption</b>	AES / WPA2-PSK
<b>Operating Time</b>	189 images / 5.2 hours*
<b>Battery charging time empty to full</b>	Within 30 minutes (when using Battery Charger) Within 60 minutes (when using Battery Charger2) Within 60 minutes (when using dedicated wired cable)
<b>Battery duration in standby status</b>	approx. 15 hours
<b>Battery expected life time</b>	Same as the panel life time
<b>External dimensions</b>	459.8 (H) x 460.2 (V) x 15.9 (D) mm
<b>Weight</b>	3.6 kg (7.94 lbs)
<b>Operating Environment</b>	+10 °C to +30 °C; 35 % to 85 % non condensing humidity
<b>When not operating</b>	-10 °C to +40 °C; 20 % to 90 % non condensing humidity
<b>Storage and transport</b>	-20 °C to +50 °C; 20 % to 90 % non condensing humidity
<b>Capture console, consisting of</b>	Capture Workstation Touchscreen Monitor DX Easy Imaging Software

\*) Under conditions that the interval between studies is five minutes and three images are captured in each study, assuming 20 seconds for each exposure to position a patient.

Software controls detector, image acquisition and optimization, connects dose area product measurement device, DICOM Send/Store, DICOM Worklist. Optional with fully integrated **DX Easy Imaging PACS** solution.

*Specifications are subject to change without notice. All brand names or trademarks are the property of their respective owners. In some countries, regulatory approval may be required to import medical devices.*

## **COLENTA** Labortechnik GmbH & Co. KG

Neunkirchner Str. 117

A-2700 Wiener Neustadt, Austria

Tel.: +43(0)2622-28311-0 Fax: +43(0)2622-28311-7

**E-Mail: [office@colenta.at](mailto:office@colenta.at)**